

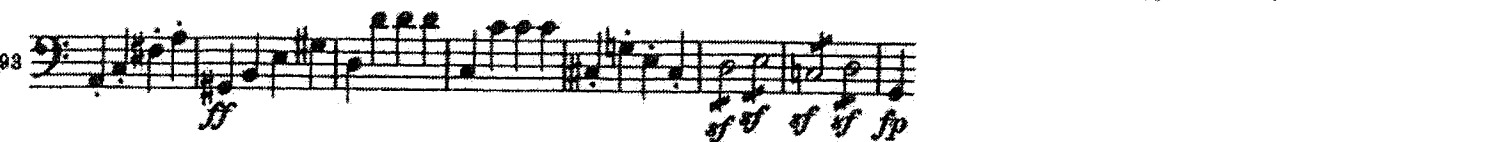
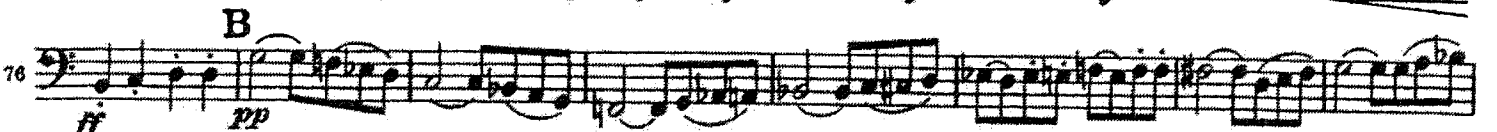
## Philharmonia Audition Excerpts – Cello & Bass

These excerpts are taken directly from repertoire that has been performed by the Philharmonia. Both excerpts are from the first movement of Beethoven's Symphony No 1 in C major. Add your own bowings and fingerings and discuss these with your private teacher. Play as expressively as you can and good luck.

Time signatures and tempo markings:

For all - half note = 80-92 in 4/4

①



②

